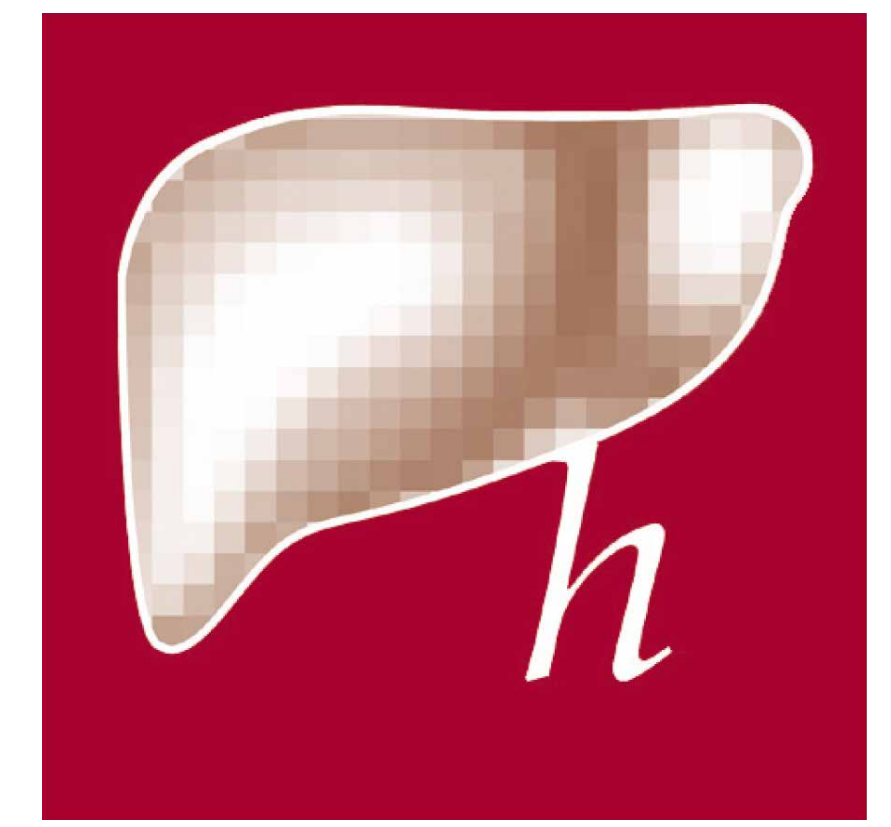


The Netherlands Association for the Study of the Liver is a dynamic young organization that aims to promote the field of hepatology. Its mission is to stimulate basic and clinical liver research, to educate physicians and scientists, to promote the interaction between these groups and to advise policy makers on liver-related subjects. The NASL currently has over 675 members and continues to grow.

NASL organizes scientific and educational meetings and supports multi-disciplinary working groups on several liver-related topics.

Furthermore, we stimulate young investigators with multiple (competitive) awards, travel bursaries and financial support for PhD thesis printing. The field of hepatology houses multiple disciplines, which is nicely reflected by diverse expertise of the NASL members and by our close collaboration with other organizations, such as national gastrointestinal research, professional organizations and international organizations supporting liver research, such as EASL.



Netherlands
Association for the
Study of the
Liver

YEARLY NASL MEETINGS

Clinical Hepatology Symposium

A clinical hepatology symposium is organized during the yearly multidisciplinary Digestive Disease Week. The symposium includes a Battle for Best Paper by Young Hepatologist.

Dutch Liver Week

The Dutch Liver Week is a yearly educational event, organized by the NASL for clinicians and residents in Gastroenterology-Hepatology from the Netherlands and Flanders, Belgium. This course contains a one-day tutorial with hands-on sessions in abdominal ultrasonography, followed by a three-day course of Clinical Hepatology, where a broad spectrum of diseases in Hepatology is discussed by experts from The Netherlands and Belgium in an interactive way.

Dutch Liver Retreat

In this yearly meeting all basic/translational researchers with an interest in hepatology come together to discuss the latest research and to seek collaborations by means of speed-dating and writing short grant proposals.



NASL WORKING GROUPS

To facilitate national collaborative research, the NASL sponsors working groups that are dedicated to a specific liver disease. These working groups coordinate the national collaboration on patient registration, biobanking of samples and consortium grant writing. The NASL currently sponsors the following working groups:

1. Auto-immune Hepatitis

contact person: Joost Drenth, email: joostphdrenth@cs.com

2. Cholestatic Liver Diseases

contact person: Ulrich Beuers, e-mail: u.h.beuers@amc.uva.nl

3. Non-alcoholic Steatohepatitis

contact persons:

Hans Blokzijl, e-mail: h.blokzijl@umcg.nl

Saskia van Mil, e-mail: s.w.c.vanmil@umcutrecht.nl

Joanne Verheij, e-mail: j.verheij@amc.uva.nl

4. Portal hypertension

Contact persons:

Minneke Coenraad: e-mail: m.j.coenraad@lumc.nl

Bart Takkenberg: e-mail: r.b.takkenberg@amc.uva.nl